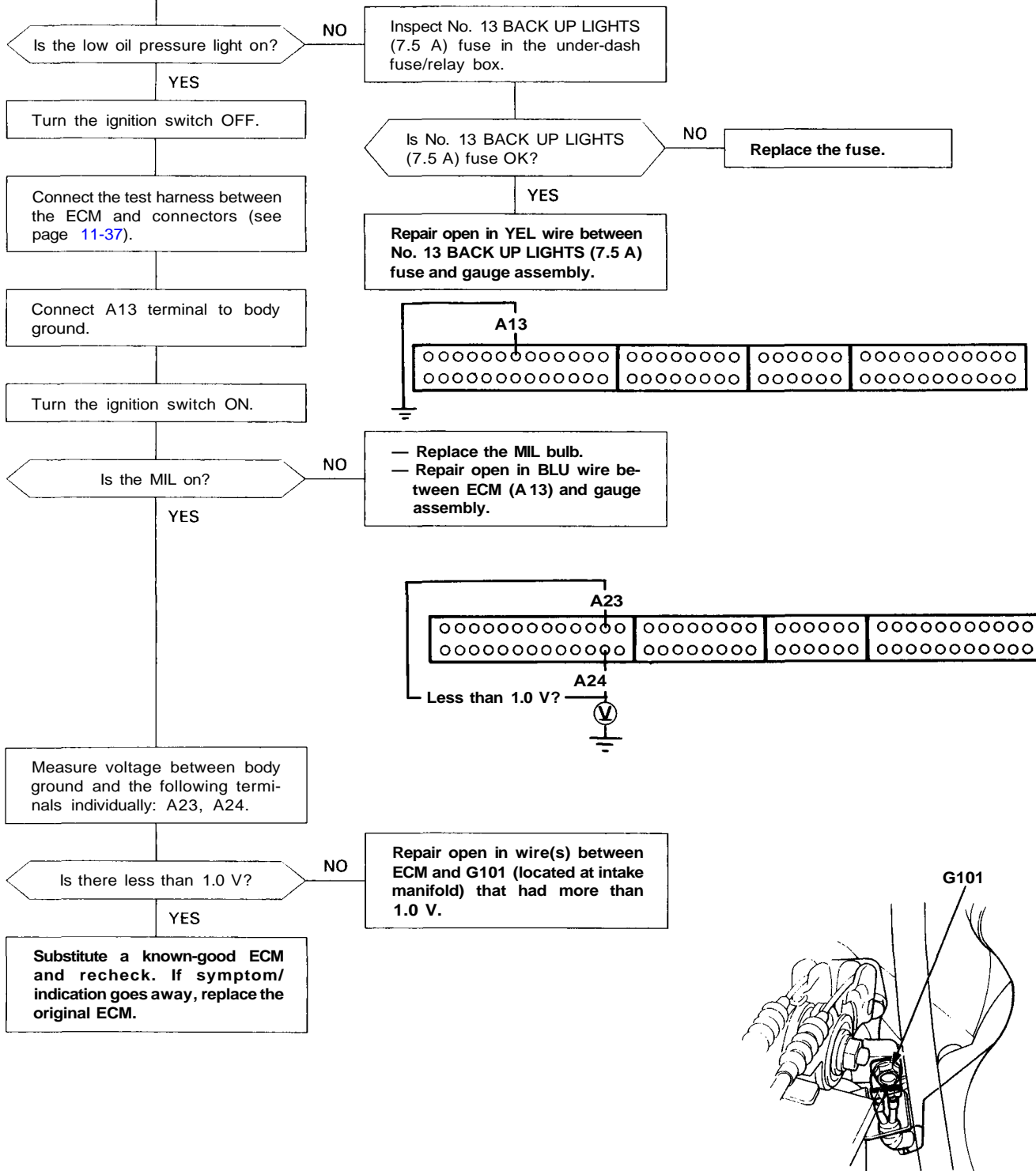


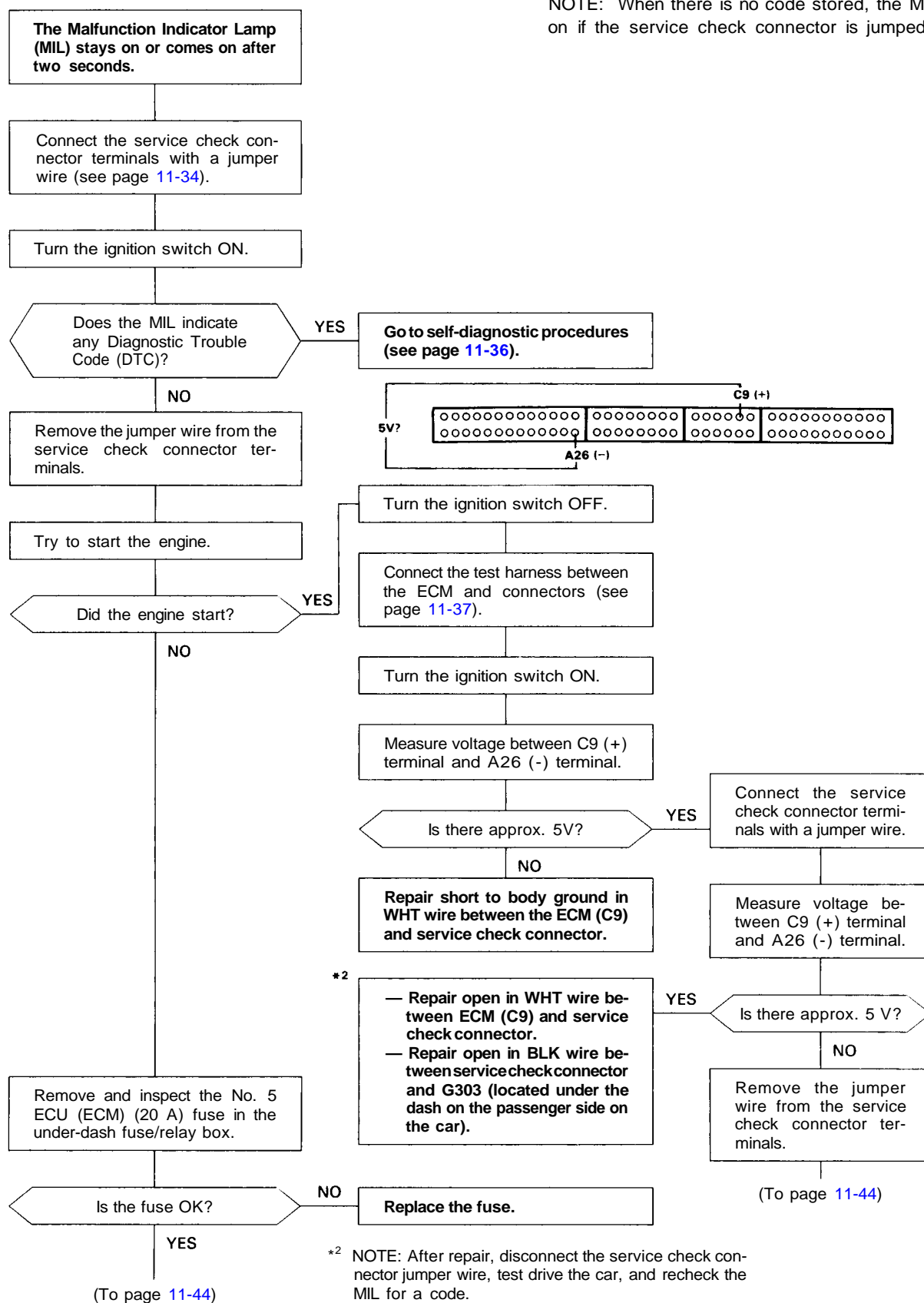
# PGM-FI System

## Troubleshooting Flowchart — Engine Control Module (ECM\*<sup>1</sup>)

The Malfunction Indicator Lamp (MIL) never comes on (even for two seconds) after ignition is turned on.

\*<sup>1</sup> M/T-equipped cars use an Engine Control Module (ECM). A/T-equipped cars use a Powertrain Control Module (PCM), which also controls transmission functions. When working on an A/T-equipped car, all references to ECM in this section actually refer to the PCM.





(cont'd)

# PGM-FI System

## Troubleshooting Flowchart — Engine Control Module (ECM\*<sup>1</sup>) (cont'd)

